

PROJECT DEVELOPMENT OBJECTIVE

Improve landscape management and increase benefits for targeted forest dependent communities in Nagaland.

Component 1: Strengthening Capacities for Integrated Landscape Management

This component will finance consulting services, goods, and works adopting climate responsive design and materials, and equipment, training to support the participating states' institutional capacity, Information and Communications Technology (ICT) systems to support decision making, and infrastructure to enable government partners to operate effectively.

COMPONENT 1 HAS FOUR SUBCOMPONENTS

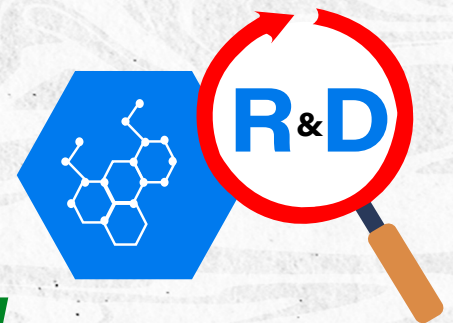


Sub-component 1.1:

Strengthening the capacity of state institutions in participatory planning, implementation, and monitoring

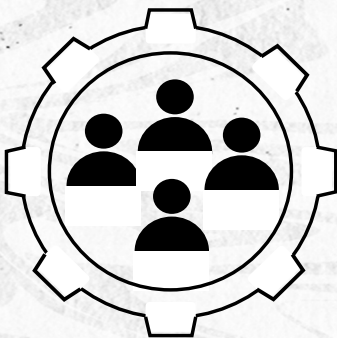
Sub-component 1.2:

Strengthening institutions for Research & Development and value chain development



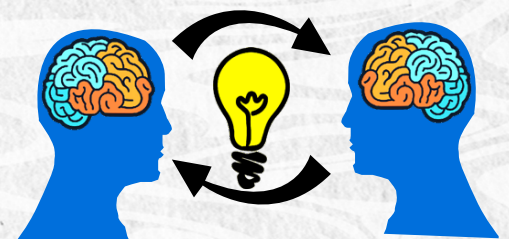
Sub-component 1.3:

Strengthening the capacity of existing/new community institutions, i.e., Biodiversity Management Committees (BMCs), Self Help Groups (SHGs), Village Management Committees (VMCs) for decentralized localized resources management



Sub-component 1.4.

Knowledge and information sharing and innovation

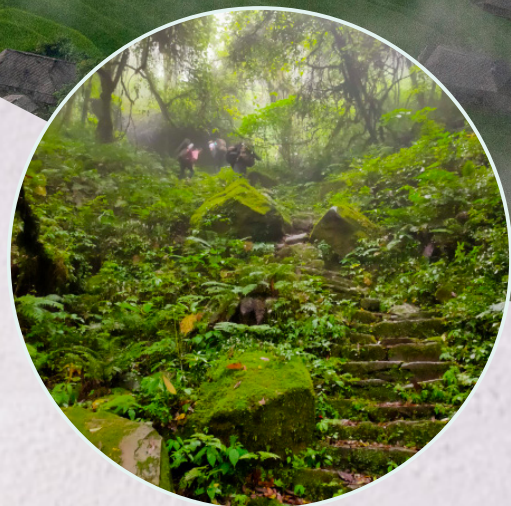




Component 2:

Restoring Landscapes for Improved Ecosystem Services

The objective of this component is to restore and maintain the ecological functions and productivity of the targeted landscapes. Activities include preparation and implementation of community-led climate-resilient landscape management plans.



This component is divided into two sub-components:

Sub-component 2.1

Developing Community Landscape Management Plans (CLMP):

Assist in the preparation of community landscape management plans for targeted catchments in the form of guidelines. Specific sub-plans will include biodiversity conservation and management, forest management, water augmentation and management, soil productivity enhancement, fire management, livelihood improvement, etc.

Sub-component 2.2

Implementation of community landscape management plans in targeted catchments :

This sub-component is supported by activities like **Forest Landscape Restoration, Soil and Water Conservation (SWC), and Food, income and livelihood Security**





Component 3: Enhancing Landscape-based Value-chains for Economic Transformation

This component will provide support for creating income and entrepreneurship opportunities by promoting processing units, markets, and forward linkages along value chains of High Value Forest Produce (HVFP) bio-resources, agriculture and allied activities, and promoting nature-based tourism.

Subcomponent 3.1: Agroforestry, Forestry and Non Timber Forest Produce (NTFP) in Value Chain Development and Forest Landscape Enterprises

The sub-component will commercialize the outputs of component 2, with the help of institutions supported under component 1 to unlock the economic potential of landscape resources of the participating Communities. This will be achieved through support to enterprises, primary and secondary processing units, and facilitation of linkages to local / global markets

Subcomponent 3.2: Augmenting Eco-tourism Opportunities

The project will support nature-based tourism through targeted technical assistance for stimulating the enabling environment, infrastructure investments, and business development services.



Component 4

Project Management, Monitoring, and Evaluation

Funding for overall Project Management to deliver on the Project Development Objectives (PDO). This includes costs for establishment of State Project Management Unit's financial management and procurement systems, and Right to Information (RTI) related activities, governance and accountability actions, Monitoring & Evaluation (M&E) and third-party audits, coordination with participating states and other stakeholders and special outreach activities, and evaluation studies.

